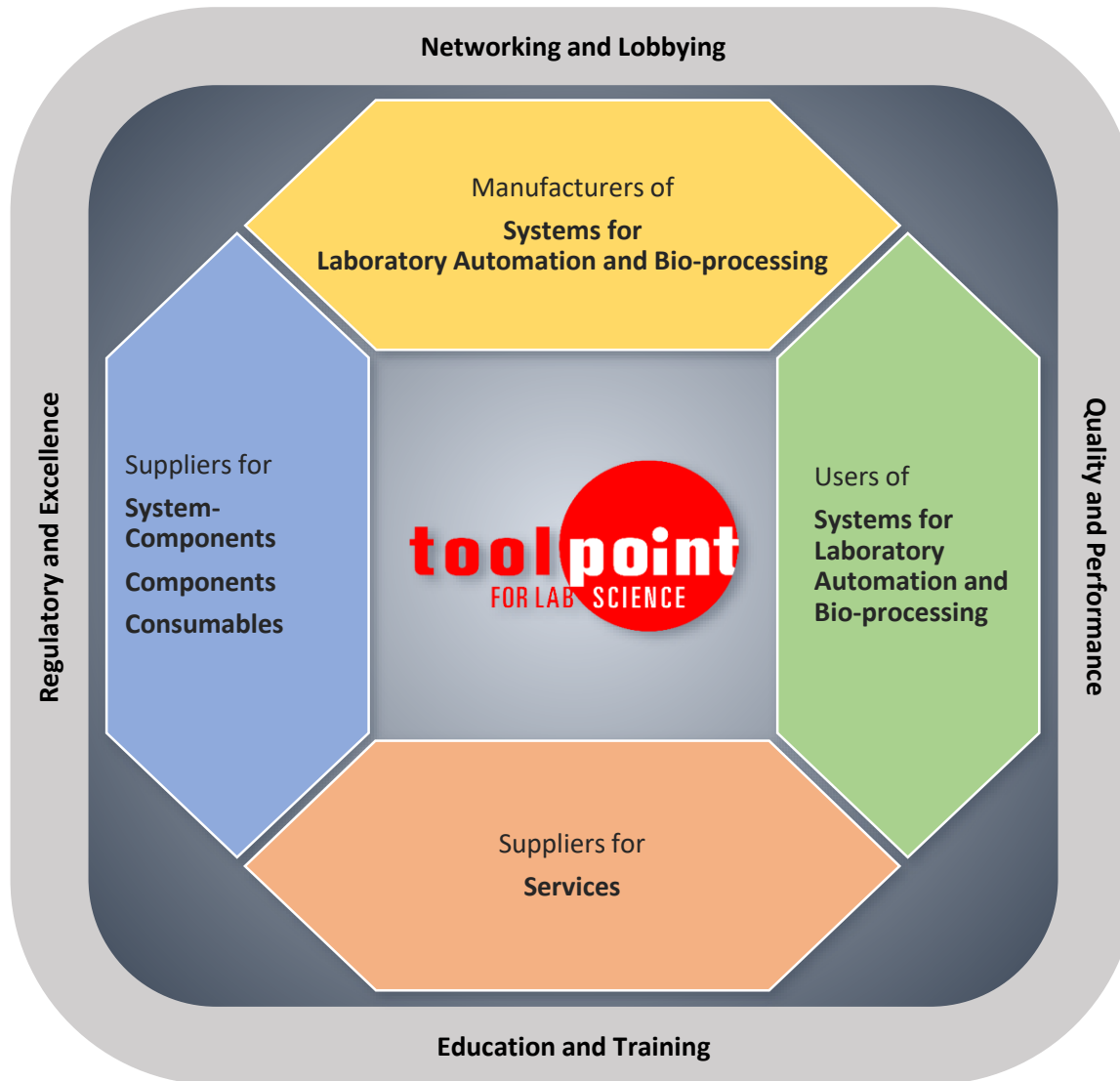
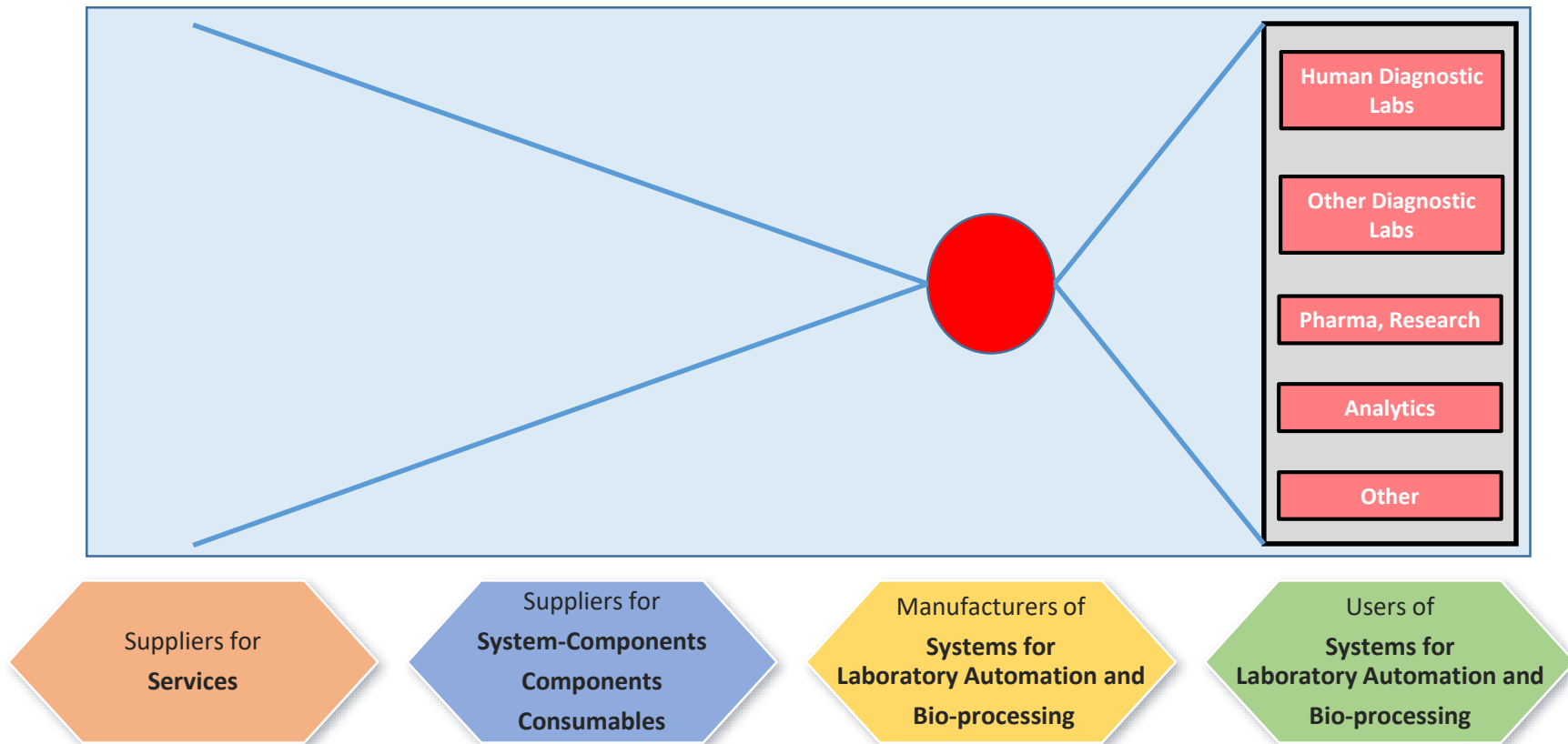


Toolpoint at the glance





Network Member Structure



Toolpoint Members

Users of
**Systems for
Laboratory Automation and
Bio-processing**

Companies that use the systems for laboratory automation and bio-processing for diagnostic and/or research and/or manufacturing
AWA, EPFL, Fraunhofer, HSR, ZHAW

Manufacturers of
**Systems for
Laboratory Automation and
Bio-processing**

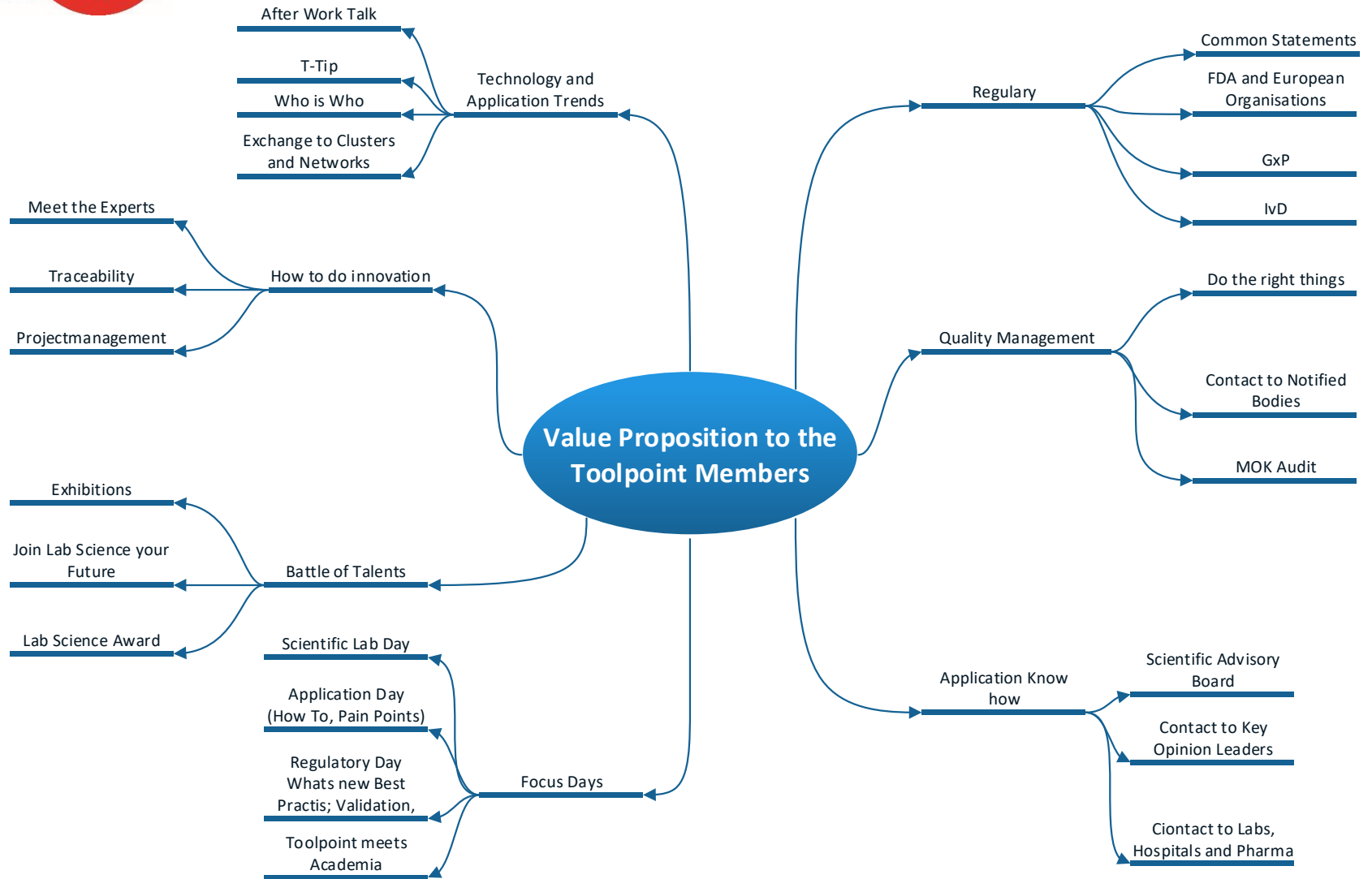
In general, all companies that supply complete systems ready for to End-Users
Aurovis, Gilson, Mettler-Toledo, Qiagen, Robert Bosch, Seyonic, Tecan

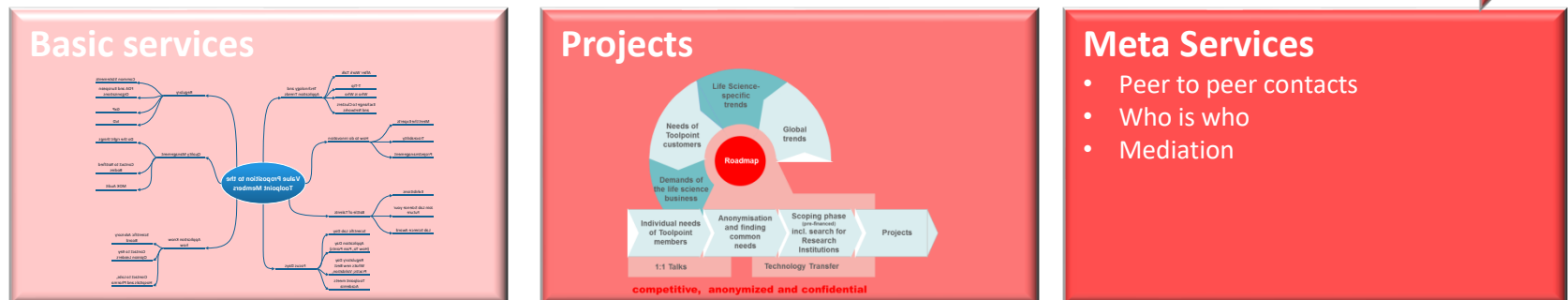
Suppliers for
**System-Components
Components
Consumables**

Companies that supply components or functional components to the Manufacturers of Systems above
Grütter Kunststoff & Formen AG, Gritec, Integra Biosciences AG, Insphero, Jossi, SuSoS

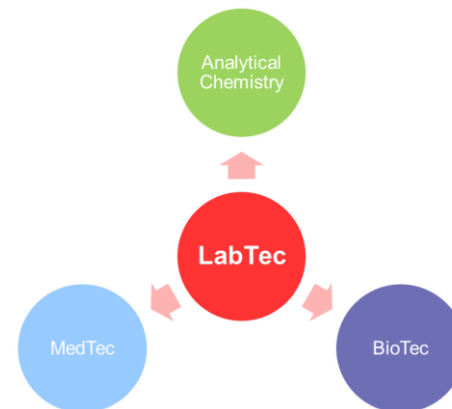
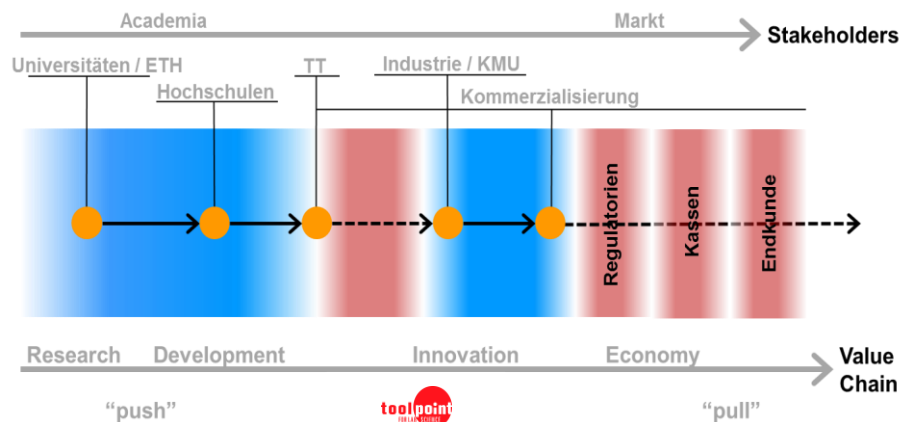
Suppliers for
Services

Companies that provide engineering and/or services to the Manufacturers and Suppliers above
1LIMS, CSEM, Helbling Technik AG, Infoteam, Noser Engineering AG, PwC, Zollner, EPFL, Fraunhofer, HSR, Hombrechtikon Systems Engineering AG, VZ Vermögenszentrum, ZHAW





Enhancing Life Science with LAB Science



- Swiss Based vertical integrated industrial Cluster of LabScience Industry
- Funded by the Members with Focus to LabScience
- Multilevel Networking inside the Community
- Networking to Basic Research, Academia, other Clusters Government and LabScience Customers
- Support for national and international Innovation Foundlings
- Single Point of Contact for Applier of Lab Science Solutions
- Common Projects, www.toolpoint.ch has initialised SiLA, Carry Over, etc.
- Enabler of cooperation's for LabScience Solutions
- Roundtables for Experts in IP, RA, HR, etc.
- Education Services for LabScience specific Themes

The Annual Report of 2017 is [online!](#)

Annual Report 2017



Enhancing Lab Science



Membership Cost Model

Costs Toolpoint Membership 2018 – For more detailed information, click [here!](#)

Membership	Premium Member	Basic Member	Start-Up	Up to 25 employees Sales< 5 Mio	Key Opinion Leader (KOL)
Basis FEE	CHF 10'500.00	CHF 3'000.00	CHF 500.00	CHF 1'000.00	CHF 250.00
The Management Fee includes Services as follows:	All Incl.	Not all Incl.	Not all Incl.	Not all Incl.	Not all Incl.
Website/extranet including content management	✓	✓	✓	✓	✓
Extranet	✓	✓	✓	✓	✓
Toolpoint newsletter (2 x year)	✓	CHF 400.00	✓	CHF 400.00	CHF 400.00
Carieer job search platform	✓	CHF 500.00	✓	CHF 500.00	CHF 500.00
Social media	✓	✓	✓	✓	✓
Communications, PR	✓	✓	✓	✓	✓
Marketing	✓	✓	✓	✓	✓
Annual report	✓	✓	✓	✓	✓
Brochure: Toolpoint for Lab Science	✓	CHF 500.00	✓	CHF 500.00	CHF 500.00
Administration	✓	x	✓		
Toolpoint meets Academia	✓	CHF 2'000.00	CHF 2'000.00	CHF 2'000.00	CHF 2'000.00
Toolpoint Annual Meeting	✓	✓	✓	✓	✓
Toolpoint Technology Information Platform (T- Tip)	✓	CHF 450.00	✓	CHF 450.00	CHF 450.00
LabTec meets Pharma	✓	CHF 1'000.00	CHF 500.00	CHF 1'000.00	CHF 1'000.00
Focus-Days	✓	CHF 500.00	CHF 250.00	CHF 500.00	CHF 500.00
Top of Toolpoint CEO Event	✓	CHF	CHF	CHF 250.00	CHF 250.00
Swiss Symposium on Lab Automation	x	x	x	x	x
SF, AWT with a member, WebEX	Registration by Host	Registration by Host	Registration by Host	Registration by Host	Registration by Host
IP Expert Group	✓	✓	✓	✓	✓
Initial IP consultation	4h	3h	3h	2h	Not incl.
RA Expert Group	✓	CHF 250.00	✓	CHF 250.00	CHF 250.00
HR Expert Group	✓	CHF 500.00	CHF 500.00	CHF 500.00	CHF 500.00
RENE recycling service for Europe	✓	CHF 750.00	CHF 750.00	CHF 750.00	CHF 750.00
Information management	✓	✓	✓	✓	✓
Cluster management	✓	✓	✓	✓	✓
Lobbying	✓	✓	✓	✓	✓
Networking	✓	✓	✓	✓	✓
Who is Who	✓	✓	✓	✓	✓
Dialogue with clusters in Switzerland and abroad	✓	✓	✓	✓	✓

Legende:

per event

per year

per person

first person for free, than per person CHF 250.--

Contact

Assoziation Toolpoint for LabScience

Verein Toolpoint for Lab Science

c/o Unitreva AG
Gewerbestrasse 12
CH-8132 Egg bei Zürich

Managing Director

Hans Noser
Phone: +41 79 300 12 32
Mail: hans.noser@toolpoint.ch

Office Winterthur

St. Gallerstrasse 57
CH- 8400 Winterthur

Administration

Janet Grolimund
Phone: +41 79 222 43 20
Mail: janet.grolimund@toolpoint.ch

Chairman

Dr. Michael Collasius
Mail: michael.collasius@hseag.com